

# *Rainbow Families of Illinois and The Center on Halsted Monthly Play Group*

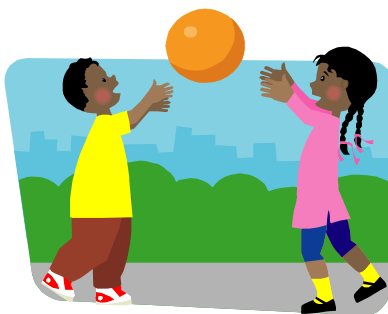
Join us on the first Saturday of the month for a  
Play Group for all ages.

Beginning:

March 7th 2009

Time:

10AM-Noon



Bring your favorite game, balls and/or toys for play. Some will be provided



**No Charge for Rainbow Families of Illinois Members**

**\$5.00 donation to the Center on Halsted for non-members**

Center on Halsted  
3656 N Halsted  
Chicago, IL



RSVP suggested but not required.  
rsvp@rainbowfamilies-il.net

Visit Rainbow Families of Illinois Website at [www.rainbowfamilies-il.net](http://www.rainbowfamilies-il.net) and the Center on Halsted website at [www.centeronhalsted.org](http://www.centeronhalsted.org) for more information and events